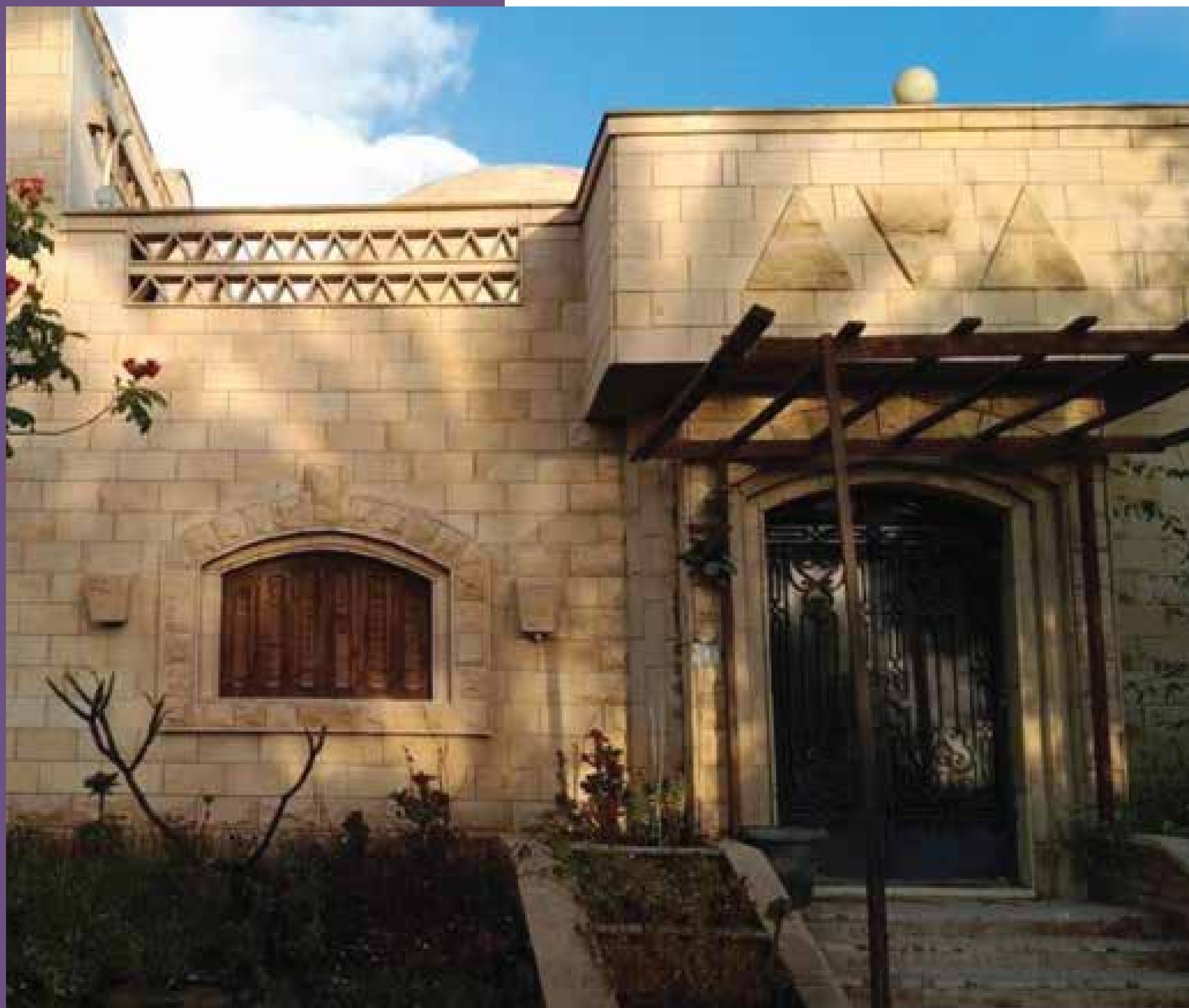




LAVANDER

FARM



LAVANDER LIFE FARM

WHERE LUXURY GROWS WITH THE SCENT OF NATURE

IN THE HEART OF NATURE, WHERE BEAUTY MEETS INNOVATION, LAVANDER LIFE EXPORTING EXTENDS AS ONE OF THE LEADING FARMS SPECIALIZING IN CULTIVATING ITALIAN, FRENCH, AND SPANISH LAVENDER.

THIS FARM IS NOT JUST A PIECE OF AGRICULTURAL LAND; IT IS A STRATEGIC PROJECT THAT INTEGRATES AGRICULTURE WITH INDUSTRY, UTILIZING ITS PREMIUM LAVENDER YIELD IN THE PRODUCTION OF LEATHER, BAGS, SHOES, ACCESSORIES, AND PERFUMES—GRANTING PRODUCTS A TOUCH OF ELEGANCE AND LUXURY WITH A UNIQUE AROMATIC SIGNATURE.



THE ESSENCE OF EXCELLENCE IN OUR PRODUCTS



SINCE ANCIENT TIMES, LAVENDER HAS BEEN RENOWNED FOR ITS NUMEROUS BENEFITS. IT IS MORE THAN JUST AN AROMATIC PLANT; IT IS A NATURAL TREASURE WITH SOOTHING, ANTISEPTIC, AND FRAGRANT PROPERTIES, MAKING IT AN ESSENTIAL INGREDIENT IN VARIOUS INDUSTRIES.

AT LAVANDER LIFE EXPORTING, WE EXTRACT ITS PURE ESSENTIAL OILS AND USE THEM IN LEATHER TANNING AND PERFUME PRODUCTION, DELIVERING A HOLISTIC SENSORY EXPERIENCE THAT BLENDS QUALITY AND SOPHISTICATION.





SCENTED LEATHER AND EXCEPTIONAL FRAGRANCES

WHAT SETS LAVANDER LIFE APART IS ITS INNOVATIVE USE OF LAVENDER IN LEATHER TANNING, A TECHNIQUE THAT COMBINES HIGH QUALITY WITH A UNIQUE AROMATIC EFFECT.

LAVENDER EXTRACTS ARE INFUSED DURING THE TANNING PROCESS, GIVING THE LEATHER A SOFT TEXTURE AND A LONG-LASTING NATURAL FRAGRANCE, ELIMINATING THE NEED FOR HARMFUL CHEMICALS. THE RESULT? LUXURIOUS LEATHER PRODUCTS THAT CARRY THE ESSENCE OF NATURE, FROM LEATHER BAGS AND SHOES TO ACCESSORIES, ALONG-SIDE UNIQUE PERFUMES DERIVED FROM THE PUREST LAVENDER OILS—OFFERING AN EXCEPTIONAL EXPERIENCE THAT BLENDS LUXURY WITH SENSORY COMFORT.





LAVENDER

A SUSTAINABLE WEALTH AND
A PROMISING INVEST-

LAVENDER IS AN ECONOMICAL AND SUSTAINABLE
PLANT, WIDELY USED IN HIGH-YIELD INDUSTRIES,
MAKING IT A STRONG INVESTMENT OPPORTUNITY
DUE TO ITS MULTIPLE BENEFITS AND POSITIVE EN-
VIRONMENTAL IMPACT.



LAVANDER LIFE LUXURY

BEGINS WITH NATURE

THROUGH OUR FARM, LAVANDER LIFE PRESENTS A PIONEERING MODEL IN SUSTAINABLE RESOURCE INVESTMENT, COMBINING CLEAN AGRICULTURE WITH LUXURY INDUSTRIES, CREATING A BRAND THAT EMBODIES NATURE IN EVERY DETAIL. HERE, WE DON'T JUST CULTIVATE FLOWERS; WE CULTIVATE SUCCESS STORIES, WHERE EACH LAVENDER PLANT TRANSFORMS INTO A UNIQUE SENSORY EXPERIENCE, AND EVERY PRODUCT REFLECTS THE CREATIVITY OF NATURE.

DISCOVER HOW NATURE TRANSFORMS INTO A LIFESTYLE THAT BLENDS ELEGANCE WITH SOPHISTICATION. INDULGE IN OUR PRODUCTS CRAFTED FROM THE PUREST LAVENDER EXTRACTS. EXPERIENCE THE HARMONY OF TRADITION AND INNOVATION, AND LET NATURE ADD ITS UNIQUE TOUCH TO YOUR LIFE.



LAVENDER

PLANT (LAVANDULA)

LAVENDER BELONGS TO THE MINT FAMILY AND ORIGINATES FROM THE MEDITERRANEAN REGION. THERE ARE MANY VARIETIES OF LAVENDER, EACH VARYING SLIGHTLY IN APPEARANCE AND FRAGRANCE QUALITY. THE LAVENDER PLANT HOLDS SIGNIFICANT COMMERCIAL VALUE IN THE PERFUME INDUSTRY AND IS CONSIDERED A CORNERSTONE IN ENGLISH GARDENS. ITS USE BECAME WIDESPREAD DURING THE ROMAN ERA, WHERE IT WAS ADDED TO WASH WATER TO SCENT CLOTHES DURING LAUNDERING. LAVENDER ALSO POSSESSES MEDICINAL PROPERTIES TO VARYING DEGREES.





Characteristics of the **LAVENDER PLANT**

- ◇ LAVENDER IS WIDELY CULTIVATED IN THE FORM OF SHRUBS DUE TO THE VALUE AND IMPORTANCE OF ITS ESSENTIAL OIL.
- ◇ THE PLANT GROWS IN A TUBULAR SHAPE WITH SMALL BLUE FLOWERS ARRANGED IN CLUSTERS OF SIX TO TEN BLOOMS.
- ◇ THE SHRUB CAN REACH A HEIGHT OF UP TO 4 METERS.
- ◇ LAVENDER TREES BLOOM FROM JUNE TO AUGUST.
- ◇ THIS PLANT IS HIGHLY FAVORED BY BEES AND SERVES AS A GOOD SOURCE OF HONEY.
- ◇ ITS LEAVES ARE EVERGREEN AND SOFT TO THE TOUCH.
- ◇ THE SHRUBS ARE POINTED IN SHAPE, STARTING FROM THE STEM AND BRANCHING OUT.
- ◇ LAVENDER BARK IS GRAY AND APPEARS SLIGHTLY PEELING.
- ◇ THIS HERB THRIVES IN FULL SUNLIGHT AND CAN GROW IN POOR SOIL.



A photograph of a small glass bottle filled with lavender essential oil, sealed with a cork and twine, surrounded by fresh lavender flowers and sprigs. The background is a soft-focus purple.

Characteristics of the **LAVENDER PLANT**

- ◇ THE GREEKS AND ROMANS USED IT IN BATHWATER FOR ITS FRAGRANCE
 - ◇ THE MEDICINAL PROPERTIES ARE EXTRACTED FROM THE GLANDULAR CELLS OF LAVENDER FOUND IN ITS LEAVES AND FLOWERS.
 - ◇ THE PLANT CONTAINS OTHER OILS, SUCH AS FLAVONOIDS, AS ACTIVE CHEMICAL COMPONENTS. THESE PHYTOCHEMICALS ARE THE PLANT-BASED ELEMENTS RESPONSIBLE FOR THE MEDICINAL PROPERTIES OF LAVENDER.
- ◇ IT IS PREFERABLE TO HARVEST LAVENDER FLOWERS BEFORE THEY REACH FULL BLOOM, PARTICULARLY AFTER A PROLONGED PERIOD OF HIGH TEMPERATURES AND EXPOSURE TO DRYNESS.
 - ◇ WHEN DRIED, THE FLOWERS CURL AND DRY QUICKLY, ESPECIALLY WHEN PLACED IN A WELL-VENTILATED AREA, AWAY FROM DIRECT SUNLIGHT



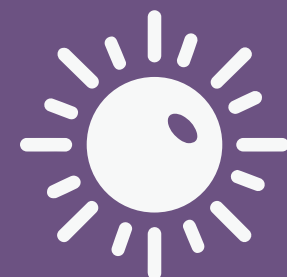


HOW TO GROW ? **LAVENDER**

GROWING LAVENDER IS NOT DIFFICULT, BUT IT DOES REQUIRE SUFFICIENT EXPERIENCE AND A SUITABLE CLIMATE. LAVENDER OFFERS MANY BENEFITS – IN ADDITION TO BEING BEAUTIFUL AND FRAGRANT, ITS FLOWERS ARE ALSO EDIBLE. THEY CAN BE USED RAW IN SALADS, ADDED TO SOUPS AND STEWS, AND EVEN INFUSED AS A SPICE IN TEA BLENDS.



ENVIRONMENTAL CONDITIONS SUITABLE FOR GROWING LAVENDER



LIGHT

Lavender requires full sunlight throughout the day to grow properly.



SOIL

As with many plants grown for their essential oils, dry soil encourages the plant to produce higher concentrations of aromatic oils. Organic matter and fertilizers should be used sparingly.

Lavender prefers well-drained, dry soil. Alkaline or calcareous soil especially enhances the plant's fragrance.

Ideal soil pH: 6.7 to 7.3.



WATERING

Lavender cultivation requires minimal irrigation, as mature lavender plants are highly drought-tolerant. However, during the initial growth phase, it's important to water the plants regularly, especially throughout the first growing season.



USES OF LAVENDER

Lavender has a wide range of uses in skincare products and the pharmaceutical industry, including:

PAIN RELIEF

Lavender oil has analgesic, anti-spasmodic, and calming effects. This plant has long been valued as a remedy for headaches.

Inhaled like a fragrance, it can help relieve tension

PERFUME INDUSTRY

Lavender Soap for Fragrance and Cleansing : Lavender is well-known and loved for its pleasant scent. Since ancient times, this herb has been used in the production of perfumes. Being naturally aromatic, lavender is known to uplift the spirit and dispel sadness.

Its sweet aroma can help relieve symptoms of dizziness. Traditionally, lavender was used regularly to give women strength and courage during pregnancy.

HOME USES

Lavender leaves can be dried and placed in sachets to repel moths and scent clothing. It can also be used to perfume rooms by adding a few leaves to incense.

The herb may be hung around the house to repel flies and mosquitoes, or sprinkled on floors for purification.



USES OF LAVENDER

Lavender has a wide range of uses in skincare products and the pharmaceutical industry, including:

TREATMENT FOR SNAKE BITES AND BURNS

Lavender essential oil has been used as a traditional remedy for certain venomous snake bites. It is one of the essential oils used to soothe tired nerves and relieve neuralgia.

It is also applied topically to burns to speed up healing and recovery.

Additionally, it is used as a gentle massage oil for inflamed muscles and joints.

DIGESTIVE HEALTH

Lavender is also used for its chemical properties to increase bile flow to the intestines and relieve indigestion.

It acts as a carminative, helping to expel intestinal gas. It can be combined with other herbs to strengthen the nervous system.

A 2002 report from Korea showed that lavender oil helped dialysis patients suffering from kidney failure by relieving itchiness and other treatment-related symptoms.





PRECAUTIONS

THIS PLANT HAS A LONG HISTORY OF USE AS AN IMPORTANT ESSENTIAL OIL AND CALMING AGENT, OFTEN CONSUMED AS LAVENDER TEA. DRINKING LAVENDER TEA IS CONSIDERED SAFE WHEN PROPER PRECAUTIONS ARE TAKEN. IT'S IMPORTANT



TYPES OF LAVENDER PLANTS

ITEM	SPANISH LAVENDER	ITALIAN LAVENDER	FRENCH LAVENDER	EGYPTIAN LAVENDER
SITE & SOIL SELECTION	Requires well-drained soil (sandy or loamy). Planting should be done in a sunny location with 6 to 8 hours of direct sunlight daily.			
LAND PREPARATION FOR PLANTING	Plow the soil to a depth of 30 – 40 cm. Remove weeds and prepare planting rows. Add well-decomposed organic fertilizers to enrich the soil.		Plow the soil to a depth of 30 – 40 cm. Add well-decomposed organic matter such as farm-yard manure. In the case of heavy soil, add sand or gravel to improve drainage.	
SEED OR SEEDLING PLANTING	It can be grown from seeds or cuttings. Seedlings should be planted at spacing intervals of 30–45 cm. If growing from seeds, scatter them in seed trays for germination.			
IRRIGATION & PLANT CARE	It requires moderate watering, with regular irrigation at the beginning, then gradually reduced. Weeds should be manually removed to keep the soil clean.	It requires moderate watering, with regular irrigation at the beginning, which gradually decreases. Weeds should be manually removed to maintain soil cleanliness. The plant does not like waterlogged soil, so it is important to avoid overwatering.	It requires moderate watering, with regular irrigation at first, then gradually reduced. Weeds should be regularly removed to maintain soil quality. The plant does not thrive in waterlogged soil, so it is important to avoid overwatering.	It requires moderate watering, starting with regular irrigation, then gradually reduced. Weeds should be removed manually to keep the soil clean. The plant does not prefer waterlogged soil, so care should be taken to avoid overwatering.
PRUNING & FERTILIZATION	It is recommended to add organic fertilizer. Pruning is done after flowering to stimulate growth and prevent the formation of non-productive woody stems.	Pruning is done after flowering to stimulate new growth and maintain the plant’s shape. It is recommended to use a balanced organic fertilizer in moderate amounts.	The plants are pruned at the beginning of spring to remove dry branches and stimulate new growth. It is recommended to add organic fertilizer or natural fertilizers in moderate amounts.	



TYPES OF LAVENDER PLANTS

ITEM	SPANISH LAVENDER	ITALIAN LAVENDER	FRENCH LAVENDER	EGYPTIAN LAVENDER
FLOWERS & HARVEST	It typically begins to flower after one year of planting and blooms in spring and summer. Harvesting is done when the flowers are at their peak to obtain the highest concentration of essential oils.	It typically begins to flower after one year of planting and blooms in spring and summer. Harvesting is done when the flowers are at their peak to obtain the highest concentration of essential oils. The plant is cut using sharp scissors or a sickle to maintain the plant's health and encourage regrowth.	It begins to flower after 12-14 months of planting. Harvesting is done when the flowers are at their peak, usually in the summer. The plant is cut using sharp sickles at an appropriate height to maintain the plant and encourage regrowth.	
AGRICULTURE DATE	It is preferable to plant in spring between (February and May) when the temperature is moderate. It can also be planted in the fall between (September and November) in areas with mild winters.	It is preferable to plant in early spring between (February and April) in moderate climate areas. It can also be planted in the fall between (September and October) in areas with mild winters.	It is preferable to plant in spring between (February-May) when temperatures are moderate. It can be planted in the fall between (September-November) in areas with mild winters.	It is preferable to plant in early spring between (February-April) in temperate regions, and it can be planted in the fall between (September-November) in warm winter areas.
DRYING & STORAGE	The flowers are dried in shaded, well-ventilated areas. After drying, the flowers can be stored or the essential oil can be extracted.			
HARVEST DATE	- Harvesting begins in late spring and throughout the summer (between May and July). The best time for harvesting is in the early morning after the dew has dried.	Harvesting takes place during the summer between (June and August). The best time for harvesting is in the early morning after the dew has dried.	Harvesting usually takes place in the summer between (June and August). The best time for harvesting is in the early morning after the dew has evaporated	Harvesting usually takes place in the summer between (June and August). The best time for harvesting is in the early morning after the dew has dried.
SOIL PH	6.5 : 7.5			



TYPES OF LAVENDER PLANTS



**SPANISH
LAVENDER**



**ITALIAN
LAVENDER**



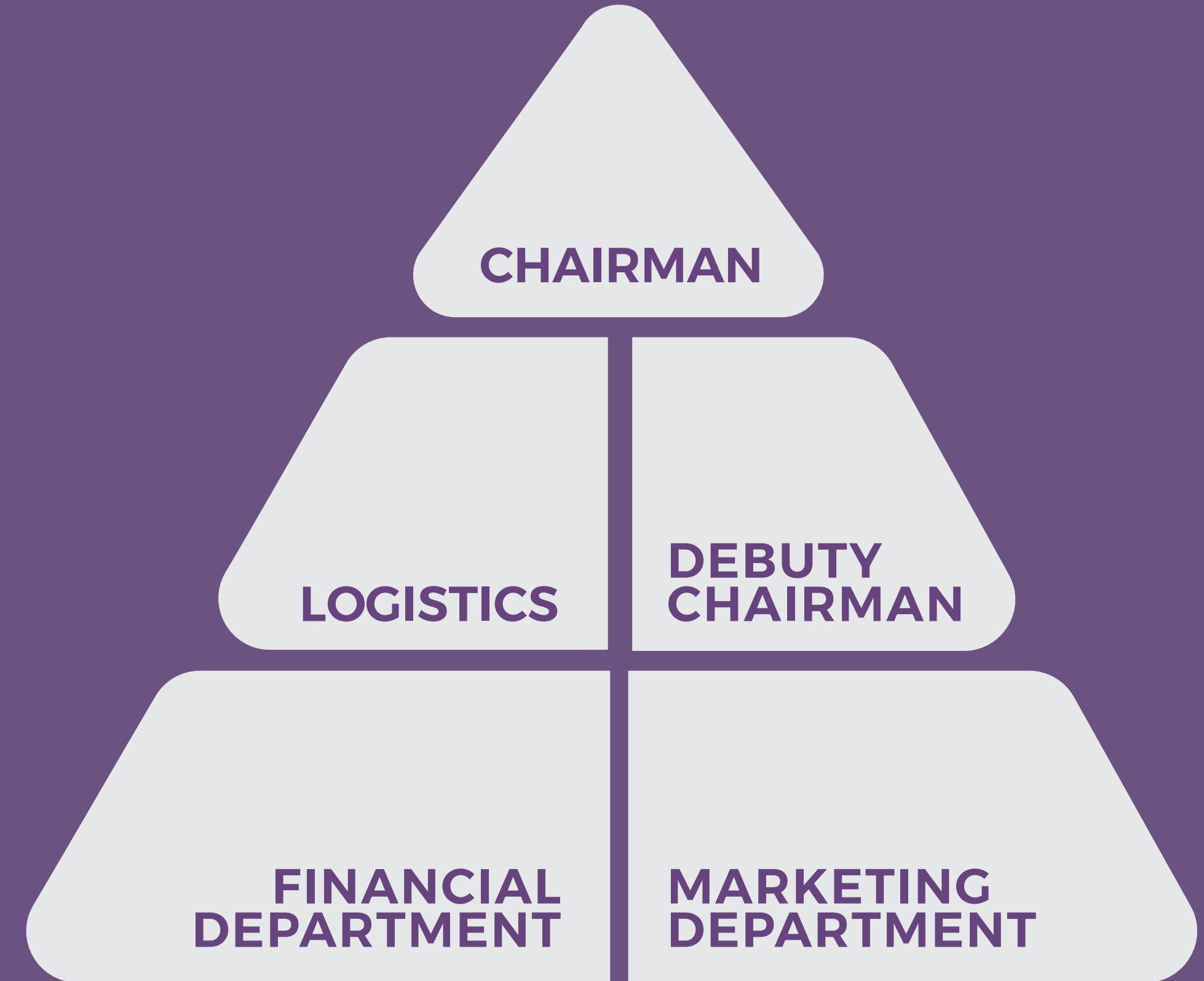
**FRENCH
LAVENDER**



**EGYPTIAN
LAVENDER**



BOARD OF TRUSTEES



BOARD OF TRUSTEES



Mr. Emad Zain

VICE CHAIRMAN OF THE BOARD
LAVANDER LIFE EXPORTING .UK



Dr. Mai El-Darawy

CEO OF LAVANDER LIFE
EXPORTING GROUP



Eng. Christine Samir

VICE CHAIRWOMAN OF THE BOARD
LAVANDER LIFE EXPORTING - EGYPT



BOARD OF TRUSTEES



Dr. Ismail Abdel-Gelil

CEO OF LAVANDER LIFE FARM



Eng. Mariam Hassan

EXECUTIVE MANAGER LAVANDERLIFE FARM



OUR PARTNERS



LAVANDER
LIFE EXPORTING
EGYPT



LAVANDER LIFE
EXPORTING UK



SOCIAL
IMPACT

LAVANDERITA
Advertising



FASHOLAVA
Training and Designing Center



غرفة صناعة الجلود
Chamber of Leather Industry





ORGANIZATION FINAL STATEMENT

" MANY OF LIFE'S FAILURES ARE EXPERIENCED BY PEOPLE WHO DID NOT REALIZE HOW CLOSE THEY WERE TO SUCCESS WHEN THEY GAVE UP ".

" IF WE ALL DID THE THINGS WE ARE REALLY CAPABLE OF DOING, WE WOULD LITERALLY ASTOUND OURSELVES "

Thomas Edison





LAVANDER LIFE...

ELEGANCE WRAPPED IN

Culture



THANK YOU

LAVANDER
FARM

